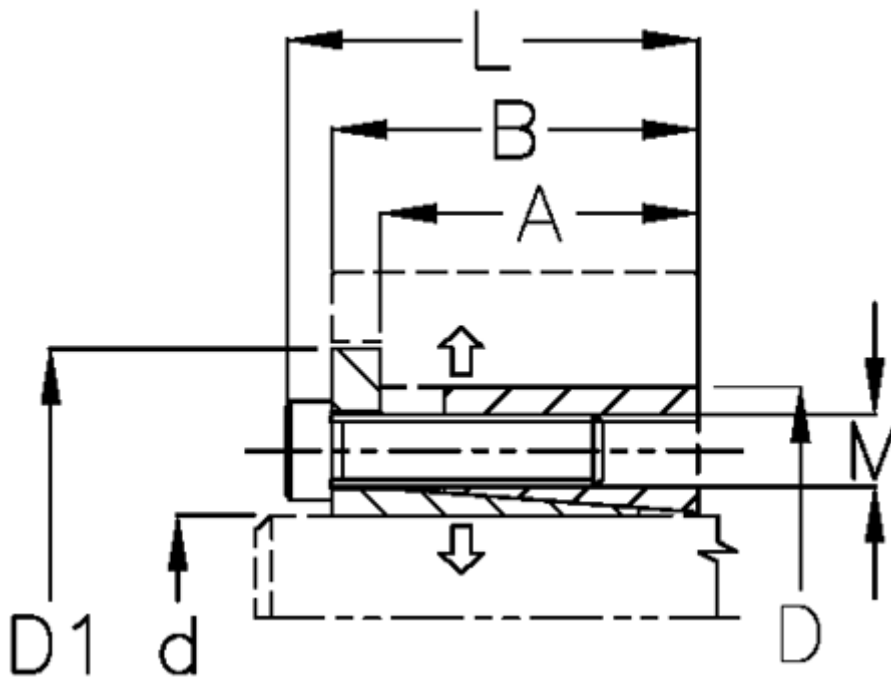


Article number: 434600080

Description: Rota-fix shaft-hub connection ES 80x120  
Steel

Note: Self centering - high transmissible torque. During the clamping, the hub can axially displace.

## Measures



|               |        |   |        |
|---------------|--------|---|--------|
| A mm          | = 29.0 | M mm  | = M10  |
| B mm          | = 40.0 | P N/mm <sup>2</sup> surface pressure on shaft/hub | = 120  |
| D1 mm         | = 129  | Surface roughness                                 | = -    |
| d H8 mm       | = 80   | T N m torque                                      | = 5300 |
| D mm          | = 120  | Ts N m bolt tightening torque                     | = 83   |
| Fit tolerance | = -    |   |        |
| F kN torque   | = 130  |   |        |
| L mm          | = 50   |   |        |